



# JORDAN VILLAGE

STUDENT HOUSING

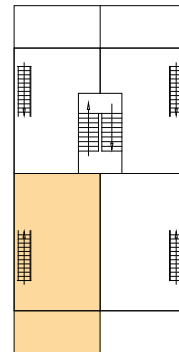
www.studenthousesxm.com



LEVEL 3

UNIT #13

BUILDING **E**



## SURFACES

Living room / Kitchen	31.56 m <sup>2</sup>	339.71 ft <sup>2</sup>
Bathroom	5.88 m <sup>2</sup>	63.30 ft <sup>2</sup>
Mezzanine	15.80 m <sup>2</sup>	170.07 ft <sup>2</sup>
Total interior surface	53.24 m <sup>2</sup>	573.07 ft <sup>2</sup>
Terrace	11.42 m <sup>2</sup>	122.92 ft <sup>2</sup>
<b>TOTAL SURFACE</b>	<b>64.66 m<sup>2</sup></b>	<b>695.99 ft<sup>2</sup></b>

