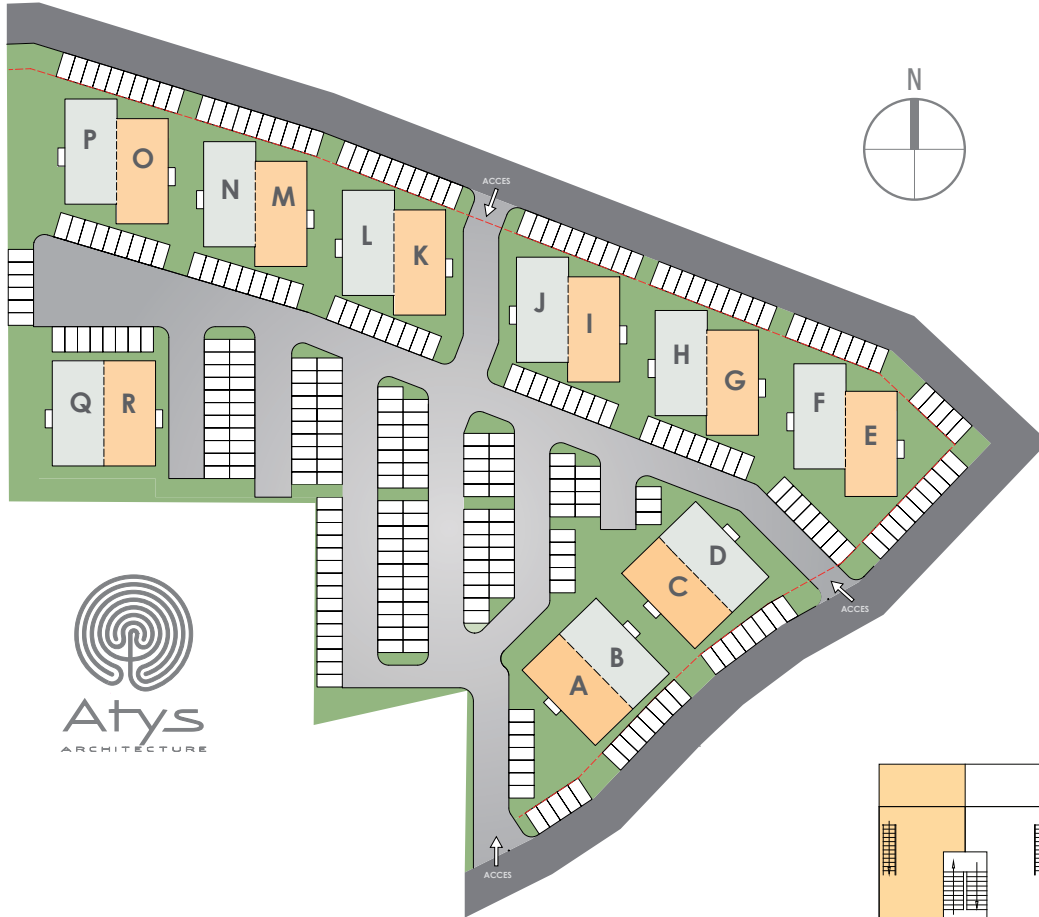




# JORDAN VILLAGE

STUDENT HOUSING

www.studenthousesxm.com



LEVEL 3  
UNIT #16

BUILDING **K**

## SURFACES

Living room / Kitchen	21.28 m <sup>2</sup>	229.06 ft <sup>2</sup>
Bathroom	5.88 m <sup>2</sup>	63.30 ft <sup>2</sup>
Mezzanine	11.15 m <sup>2</sup>	120.02 ft <sup>2</sup>
Total interior surface	38.31 m <sup>2</sup>	412.38 ft <sup>2</sup>
Terrace	11.50 m <sup>2</sup>	123.78 ft <sup>2</sup>
<b>TOTAL SURFACE</b>	<b>49.81 m<sup>2</sup></b>	<b>536.16 ft<sup>2</sup></b>

